

# Soft Workshop

digimess® soft

Order No.: H.UC 90-10

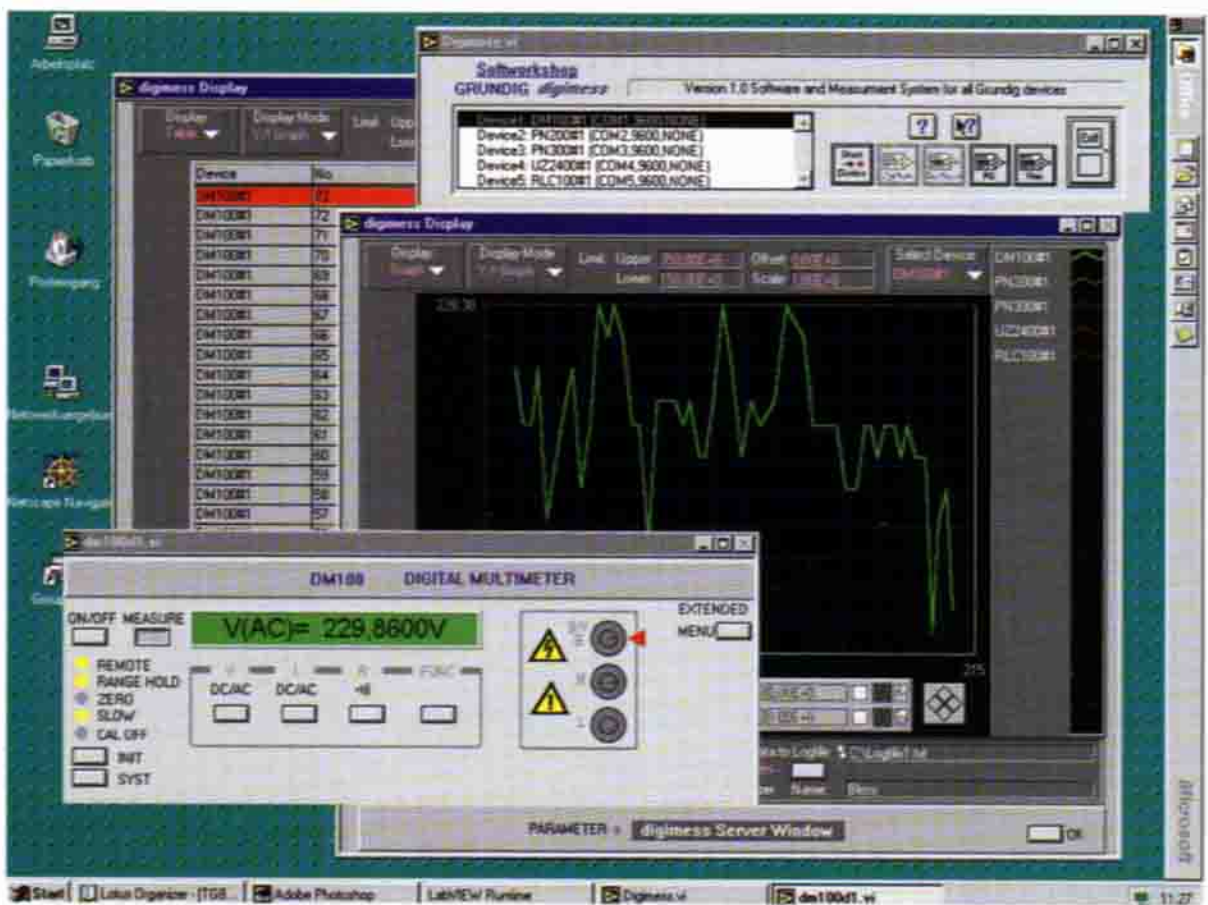


Fig. 1: Working example "DM 100 as a data logger"

The Soft Workshop is the logical extension to Grundig's **digimess**® range of measuring instruments and our response to a host of customer enquiries concerning PC measuring technology. The ultimate aim of the Soft Workshop is parametering instead of programming. This appeal to anyone keen to utilise modern measuring technology but not keen on constantly sorting out communication problems with his PC. As someone familiar with electrical measuring technology on a general level, at least one or more measuring instruments from the **digimess**® range and as the user of one of the well-known operating systems WIN 95 or WIN NT, exploiting the Soft Workshop to automate your particular measuring task will be child's play which will call for only elementary skills in handling the operating systems. Operate your virtual **digimess**® unit just as you would your real measuring instrument. Adopt an intuitive approach to your work and leave it to the Soft Workshop to analyse and document your measurements in a wide variety of ways. Use, for example, "your" data

logger immediately within an extended virtual instrument. Compile complete test sequences based on the integrated, self-learning sequencer program. The basic Soft Workshop version contains the basic backup features for all the **digimess**® measuring instruments available up to a certain date as well as recommended products from other suppliers. Soft Workshop is built around current software sets which, at the same time, act as a "key" for every measuring instrument to be operated under Soft Workshop and have to be available for each type of unit. This approach is particularly welcome to the large number of users who have already acquired one software set and are now aiming to extend their options with the Soft Workshop. The Soft Workshop, which is programmed in G, is characterised by ease of operation, interfaces with standard office packages and data analysis programs as well as excellent value for money. All this ensures that the Soft Workshop will find wide application in the fields of research, development, production, service and training.

## Soft Workshop system survey

<b>General</b>	
The Soft Workshop is a software package for creating PC-based measuring technology applications, preferably with instruments from Grundig's <b>digimess</b> ® range. The Soft Workshop uses existing software sets.	
<b>System requirements</b>	IBM-compatible PC
Minimum processor	486 DX
Recommended processor	Pentium 100 or greater
Hard disk	15 MB free storage space
Interfaces	minimum one free RS 232 interface
Operating system	Windows 95, Windows NT
Disk drives	3 1/2 inch disk drive, CD Rom disk drive
Interfaces	At least one free COM (RS 232) interface

<b>digimess® system software</b>	
Software sets	each <b>digimess</b> ® unit is supplied with so-called software sets, consisting of one Labview Runtime surrounding, one specific Labview unit driver and one 25-pole RS 232 connecting cable with additional 25-pole to 9-pole adapter.
Soft workshop	Extension of existing software sets with functions for data saving, display, prototyping, evaluation, automated measuring sequences, integrated sequencer program

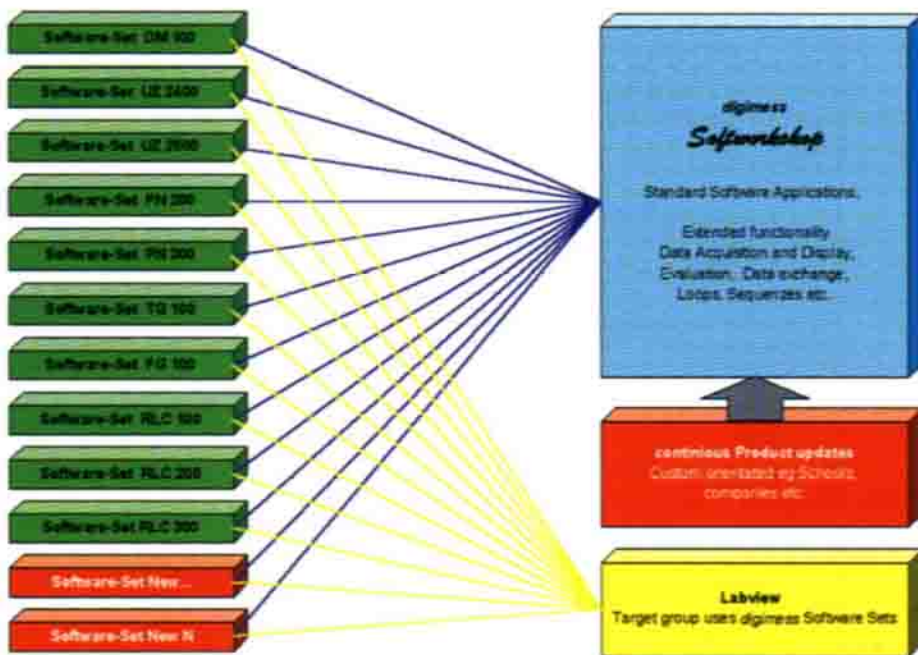


Fig. 2: digimess® software system components

### Display

Minimum 800 x 600 Super VGA graphic or higher, laptop operation possible, optimum display with a screen resolution of 1024 x 768.

### Interface/Remote control

Soft Workshop assists RS 232 C, IEC bus interface, system controller SC 600.