

digimess®

LabVIEW® software set

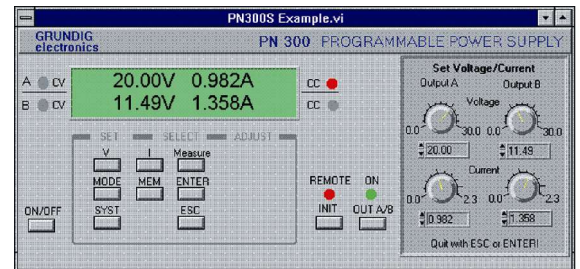
Installation notes

Computer configuration

Processor	:	Minimum 80486
RAM	:	Minimum 8Mb
Operating system	:	Microsoft Windows®
Hard disk space	:	Minimum 8Mb

- 1) Start Windows® and select the File "Run" command
Start SETUP Disk 1 with "A:\SETUP.EXE"
Select installation directory
Click on button for "Complete installation"
Installation of Disk 1 is completed
- 2) Select the File "Run" command
Start SETUP Disk 2 with "A:\SETUP.EXE"
Select the same installation directory as above
Click on button for "Complete installation"
Installation of Disk 2 is complete

Example of PN300



After the installation of both disks the program is started using "GRUNDIG.EXE" in the program group of "GRUNDIG". The program manages the installed device drivers and serves as a system control program. The SETUP of Disk 1 is not required again for installing several device drivers.

Cable

The enclosed cables are for connection between the PC and the device. A specific connection direction is not necessary. The 9 pin to 25 pin adapter is provided for cases where 9 pin connections are present.

Program Start

The program selected from the program group of "GRUNDIG" by a double click or CR. However, first the interface parameters COM1 or COM 2 have to be correctly defined and should match those set on the device (Refer to the device's manual for changing the settings).

Incorrect interface parameters will cause an error message in the form of a switch, which will become invisible by pressing it or by correctly configuring the interface.

General notes

The programs have been developed using the system LabVIEW® by National Instruments. The user can control the program with the LabVIEW® run time or he can modify the existing source texts with a complete version of it. System users can install the drivers in extensive program systems without problems.

Error Messages

- Error Init
- incorrect interface or parameters were selected
 - device switched off or no cable has been attached
 - device is in local mode

- In general
- virtual devices can be closed using ALT – F4 in case faults occur
 - in case the baud rate has been incorrectly set, the device has to be switched on again
 - a new initialisation (INIT) has to be made after manually setting local mode
 - the system has to be initialised again (SYST) after incorrect definition of interface parameters